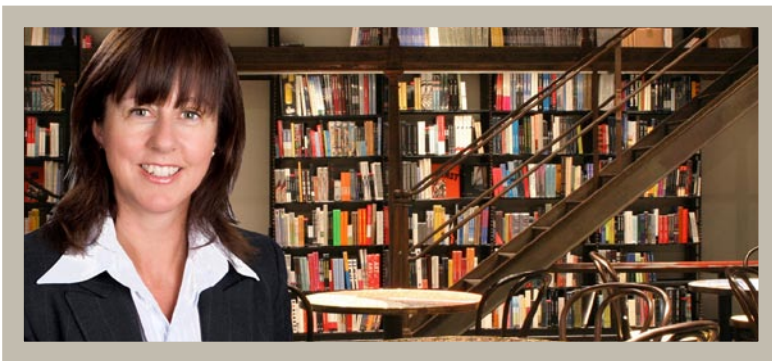


Rachael Robertson LLB



Practice Areas

Power of Attorney
Wills, Trusts and Estates
Property
Business

Introducing Rachael Robertson

Rachael is based in our Christchurch office; she is also available for an appointment in any of our offices.

Rachael graduated from Otago University in 1990. She started her legal career at an Invercargill law firm before moving in Dunedin to take up a role as a risk manager in a large public sector organisation. She joined Corcoran French in 2002 becoming a partner in 2005.

More than a lawyer

Mother of two sons
Married to Chris
Avid reader
Keen gardener
Aspiring art collector
Chairperson of local primary school board of trustees

Christchurch Office

Physical: Level 4,
217 Gloucester Street
Postal: PO Box 13-001
Christchurch 8141
Ph: (03) 379 4660
Fax: (03) 379 4614

Contact Details

Rachael Robertson (Partner)
Email: rachael@corcoranfrench.co.nz
Maria Peters (Secretary)
Email: maria@corcoranfrench.co.nz



NZLAW Group Member

Corcoran French is a member of an independent association of legal firms throughout New Zealand forming the NZLaw group.
www.nzlaw.co.nz